



TONIGHT'S OBJECTIVES

INTRODUCE THIS PHASE OF THE PROJECT

- BACKGROUND & CONTEXT
- FINANCIAL
- TIMELINE

GET FEEDBACK ON:

- SITE DESIGN OPTIONS
- POOL FEATURES

TONIGHT'S AGENDA

- 6:00 PM WELCOME
- 6:15PM PRESENTATION
- 7:00 PM QUESTIONS / ANSWERS
AND COMMUNITY DISCUSSION

WORK TO DATE

- PROS Plan 2014
- Assessment & concept 2015 - 2016
- Geotechnical study 2016
- Financial review 2017 - 2018
- Community survey 2017
- Design team selection 2018



SCHEDULE

Dates	
May 29, 2018	Public Meeting #1 Project understanding, vision
June -July 2018	Public Online Survey & Design coordination
August 2018	Public Meeting #2 Review of options and design ideas
September 2018	Schematic design complete
October 2018 – March 2019	Design
Early 2019	Bond approval
Spring/Summer 2019	Permits and Bidding
Summer/ Fall 2019	Construction begins

FINANCIAL OPTIONS

- Council is review all options for levy / bond
- Anticipate pursuing a bond in early 2019
- Gathering public input and financial plan
- Design team input on schematic design costs and phasing

LEVY AND BONDS :

\$ 4 MILLION

\$ 9 MILLION

\$ 14 MILLION

PAY BACK OPTIONS :

LEVEL OR WEIGHTED

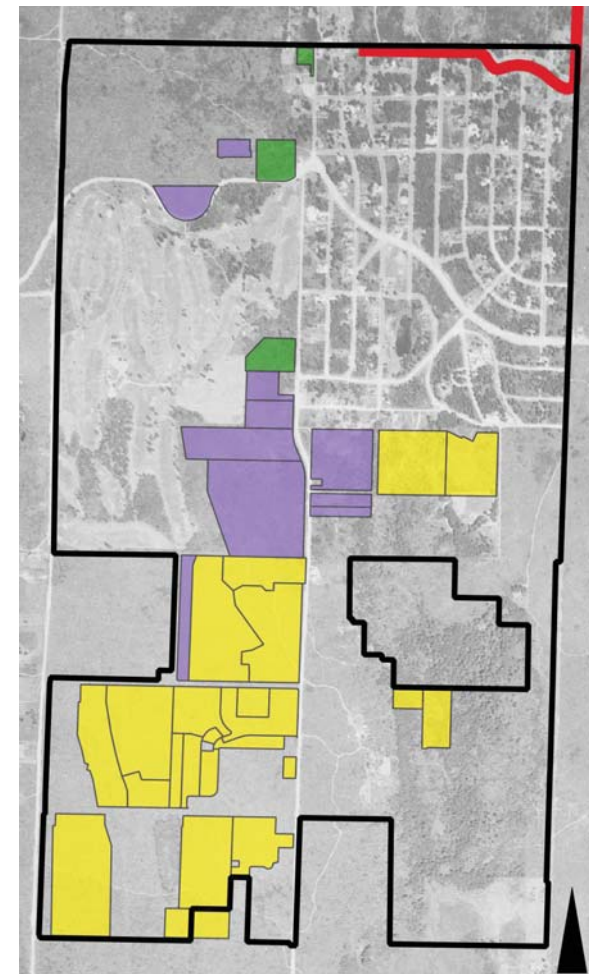
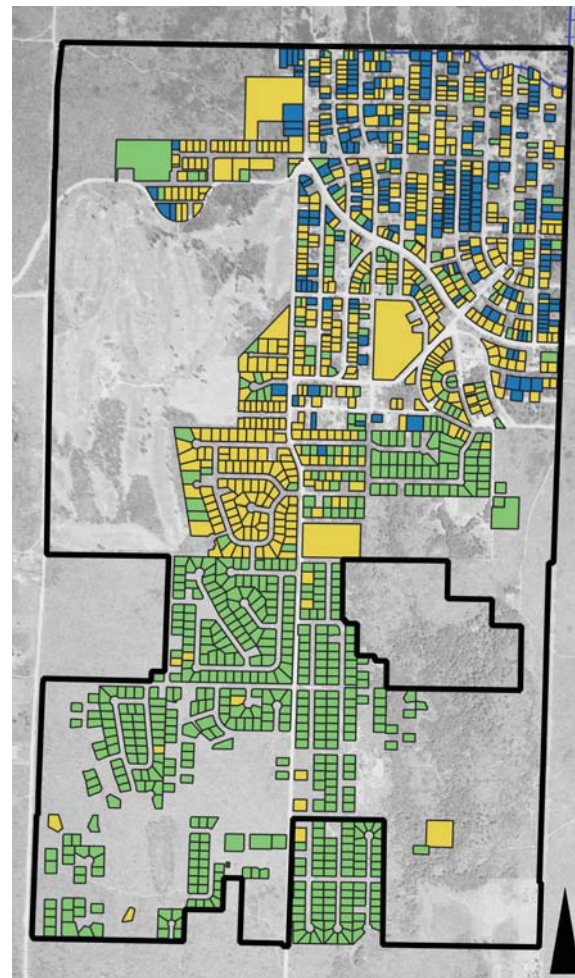
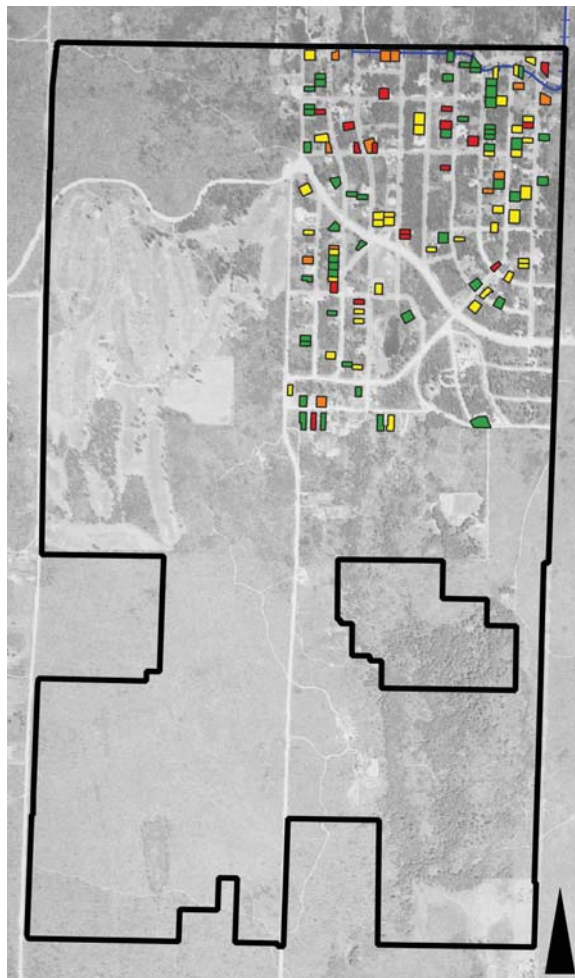
1 BOND ISSUE OR 2 BOND ISSUES

10 YEAR OR 20 YEAR OR LONGER

HISTORY

City's Key Development Periods:

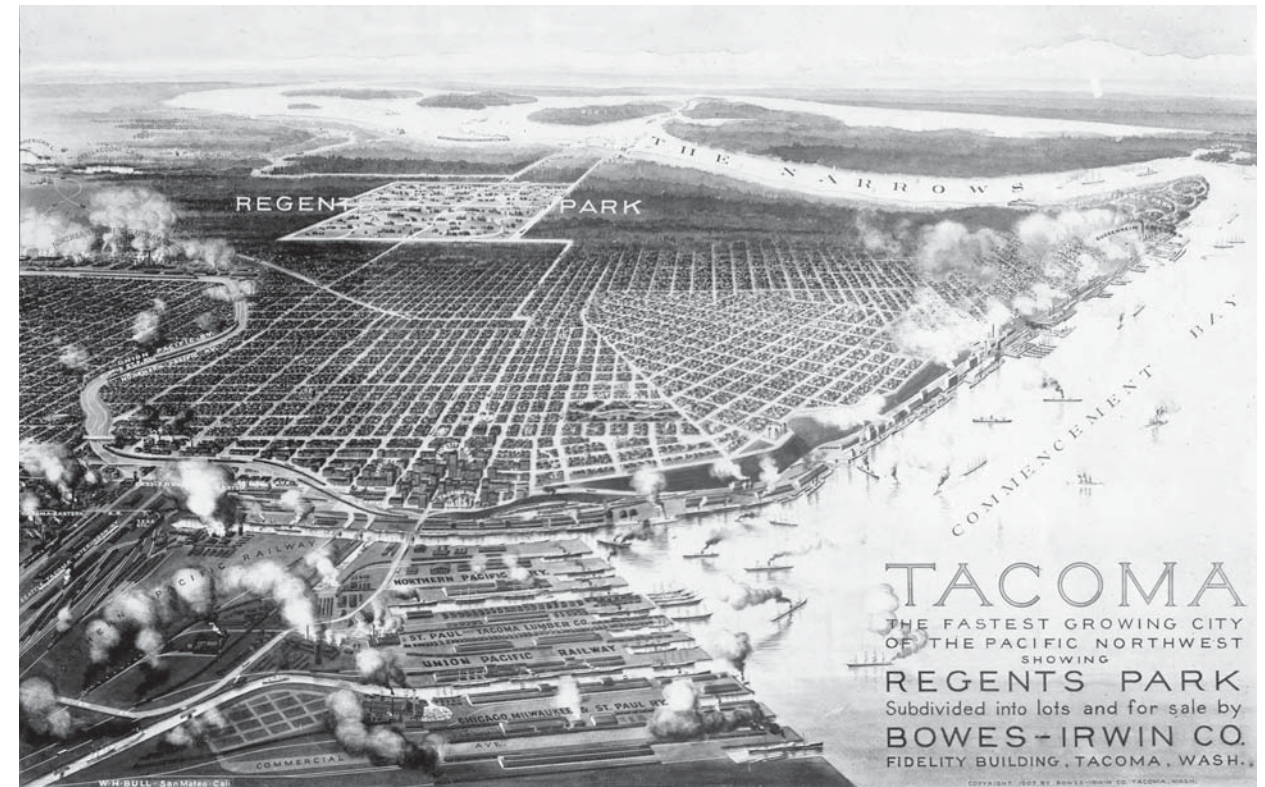
- 1) 1906 to 1929: Initial development as an upscale residential subdivision through its incorporation as a city
- 2) 1940 to 1969: Suburban growth and development during and following World War II



HISTORY

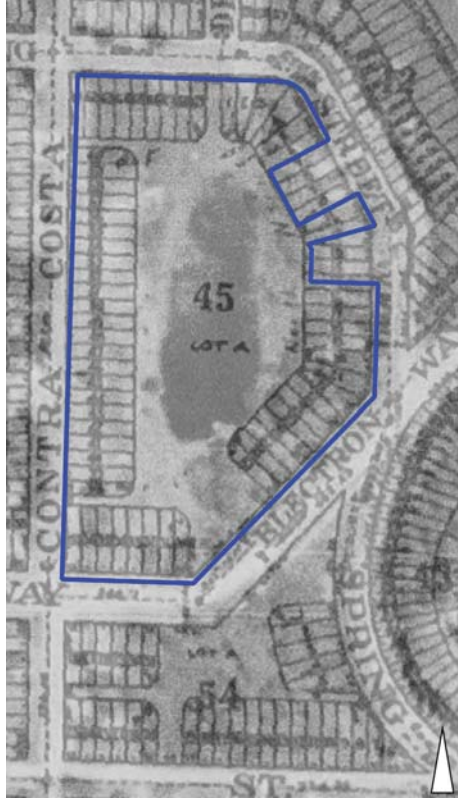
Fircrest Park began as

- A chain of spring fed, artificial lakes
- Developed by the Narrows Land Company as amenities to support outdoor recreation and social gatherings
- Available for all residents



HISTORY

- The Fircrest park developed in stages with primary development in 1960's.
- Field irrigation and lighting project in 1994.
- Kiwanis Pavillion in 1990.



1941



1951



1957



1968



1971



2017

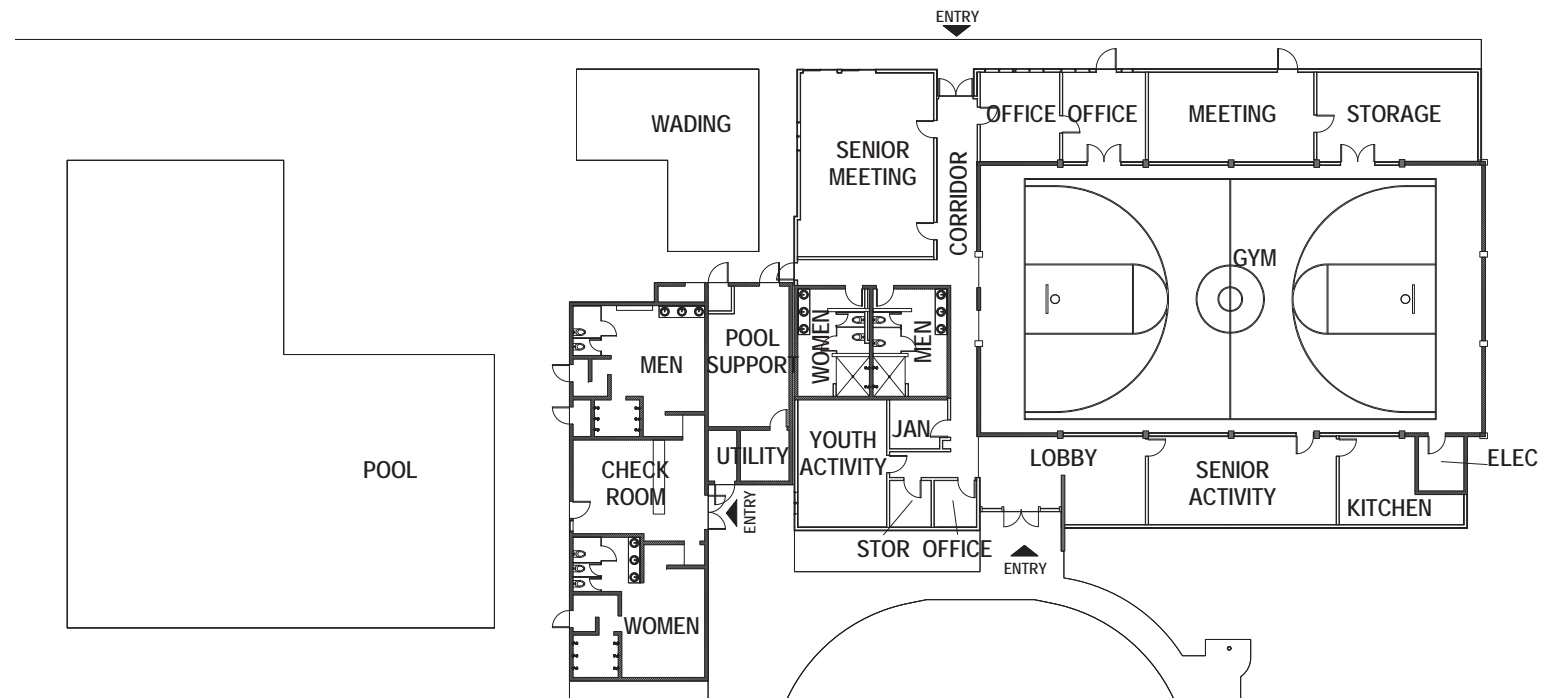
HISTORY

- Community Center was built in 1960 and the Pool was built in 1962.
- Designed by Walt Widmeyer, a local architect
- The center was renamed after Roy H. Murphy, first Parks & Recreation Director.



POOL & COMMUNITY CENTER ASSESSMENT

- Losing water
- Sloped decks
- Uneven skimmers
- Not competition length
- Old pool mechanical
- Hydrostatic conditions
- Lockers rooms not ADA
- No family changing rooms
- Not enough storage
- No diving boards
- No Central Control / hidden hallways
- Gymnasium - no side lines or bleachers
- No fire sprinklers and aging systems
- Fire alarm & Lighting not updated
- Minimal seismic structure
- Restrooms and Kitchen are small



GRAPHICS



EXISTING COMMUNITY CENTER AND POOL

SOLAR ACCESS

MAJOR CIRCULATION

POINTS OF ENTRY

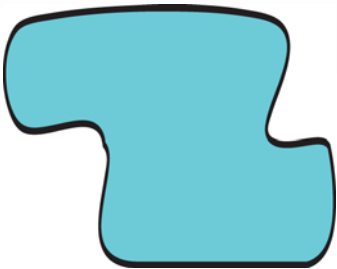
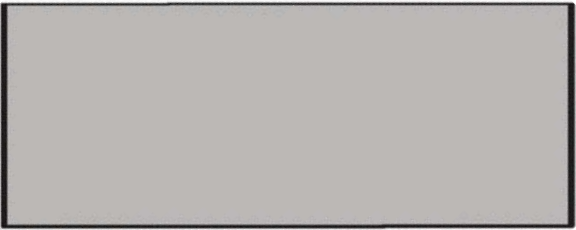
VIEWS

PARKING

NEW POOL

NEW BATHHOUSE

NEW COMMUNITY CENTER

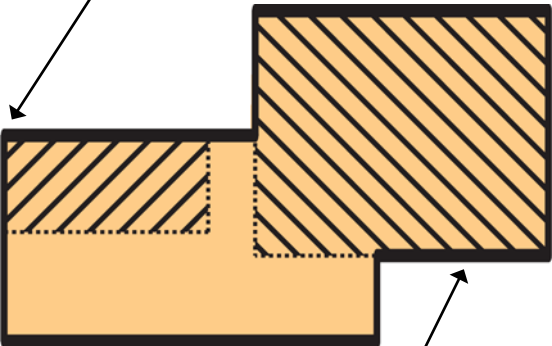


PUBLIC RR



TICKETING

MULTI-PURPOSE

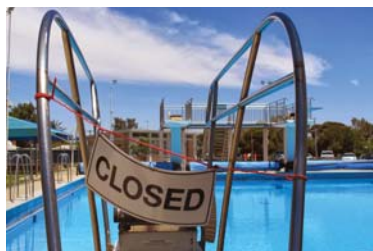


GYM

STREET EDGE

Notes:

- Existing community center remains open during construction
- Pool close to existing drop off
- Bath house connects to park



STREET EDGE

Notes:

- Existing community center demolished
- Social hall connects to park
- Gym plaza to south
- New parking at south
- Additional possible parking at street



STREET EDGE



GATEWAYS

Notes:

- Both buildings face south
- Bath house near Pavilion
- Existing pool & CC remain open during Phase 1
- Park space expanded in Phase 1



GATEWAYS

Notes:

- Gateway between the buildings
- Both buildings face south
- Pool has views of park
- Social hall connects to park
- CC closed during Phase 2 construction



GATEWAYS



WOONERF

Notes:

- Develop Woonerf type parking and plaza to the west in Phase 2.
- New bath house connects to park.
- Pool closed during Phase 1 construction
- Existing CC remains open during Phase 1



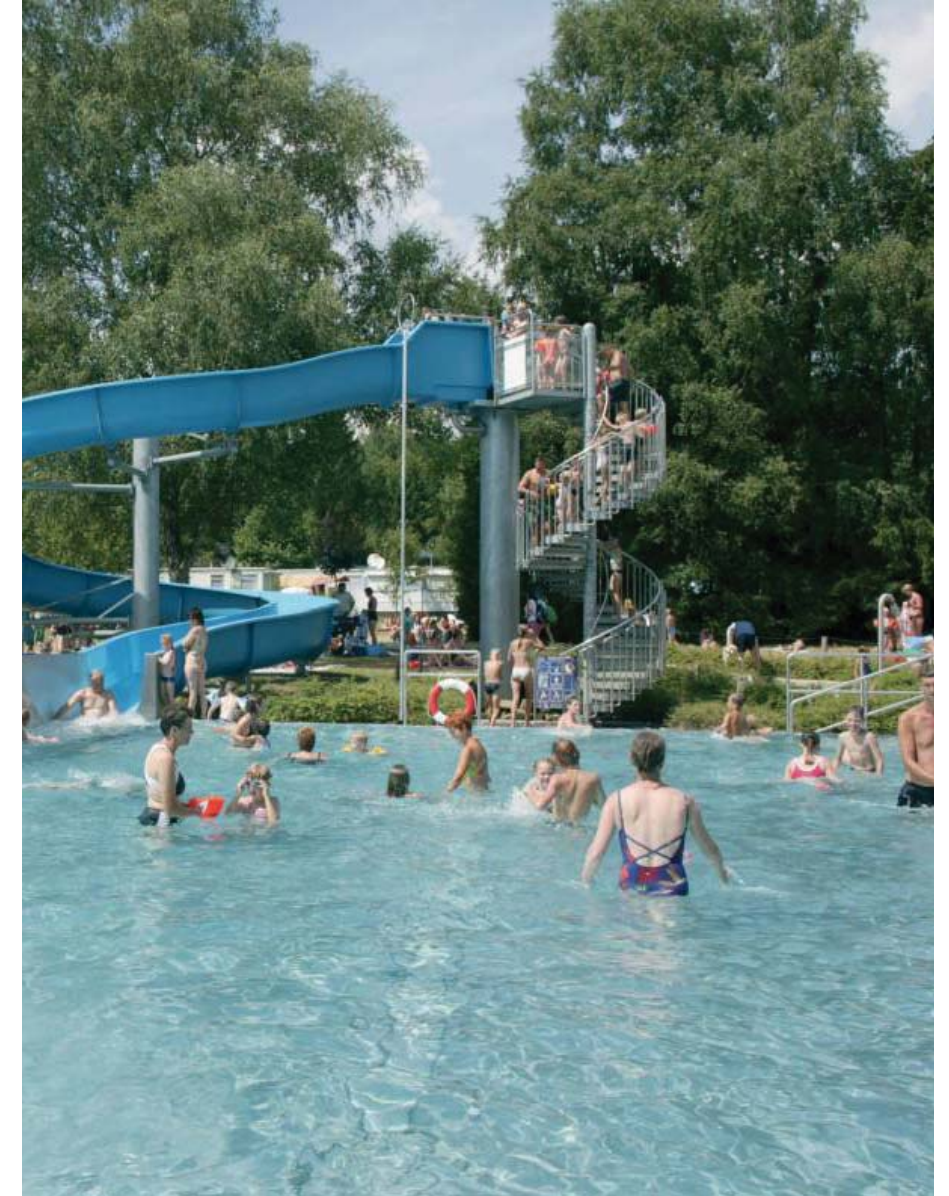
WOONERF

Notes:

- Woonerf / parking to west with easy access to buildings
- Pool has views to park
- Bath house is near pavilion & park (too close to ball field?)_
- Existing CC remains open during part of construction.



WOONERF



POOL FEATURES

WHAT IS YOUR RECOMMENDATION?



**QUESTIONS ? COMMENTS ?
LET'S TALK.**