

**City of Fircrest
Planning Commission Public Hearing**

Resolution No. 18-05
Resolution No. 18-06
Resolution No. 18-07



6520 19th St., W, Fircrest WA 98466

Chick-fil-A Presentation

- **Overview**
- **Design Elements**

Street View of Existing Conditions



Existing Conditions

Northeast Birds Eye View



Proposed Project

Northeast Birds Eye View



Design Elements

1) Right-in
right-out

2) Design &
pedestrian
elements

3) Drive-thru
located
behind
building

4) Stacking
exceeds City
requirements

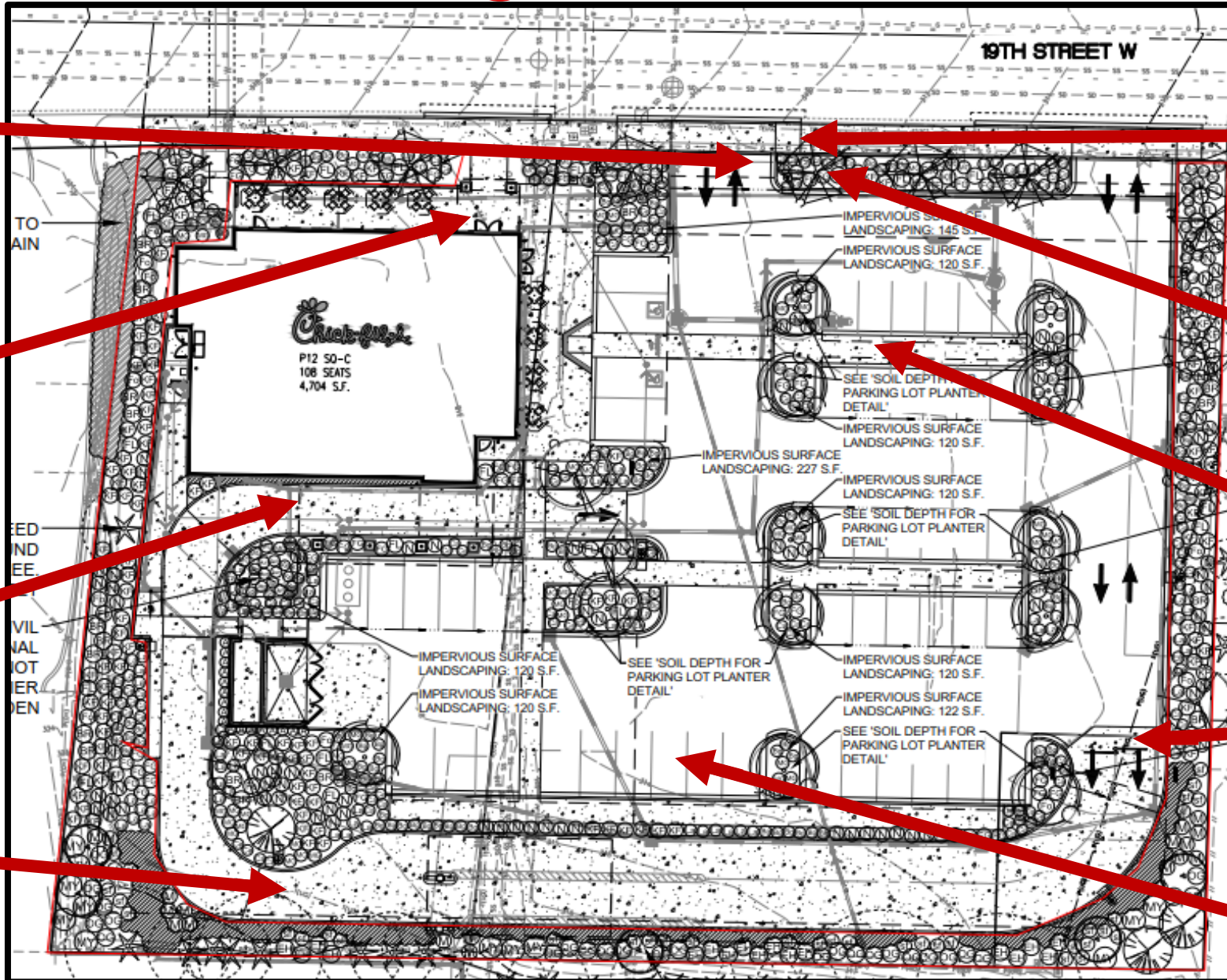
5) Public ROW
improvement
& sidewalk
widened

6) Landscape
screening of
parking lot

7) Safe
pedestrian
walkways

8) Drive-thru
entry at rear of
property

9) Adequate
parking



Summary

- Promotes a compatible development with city code and guidelines
- Improves the existing area
- Protects and enhances the character of the neighborhood
- Enhances public ROW and public space
- Efficient stacking and on-site movement
- Safe, comfortable pedestrian environment
- Minimal impact on adjacent land uses

Street View of Proposed Project

