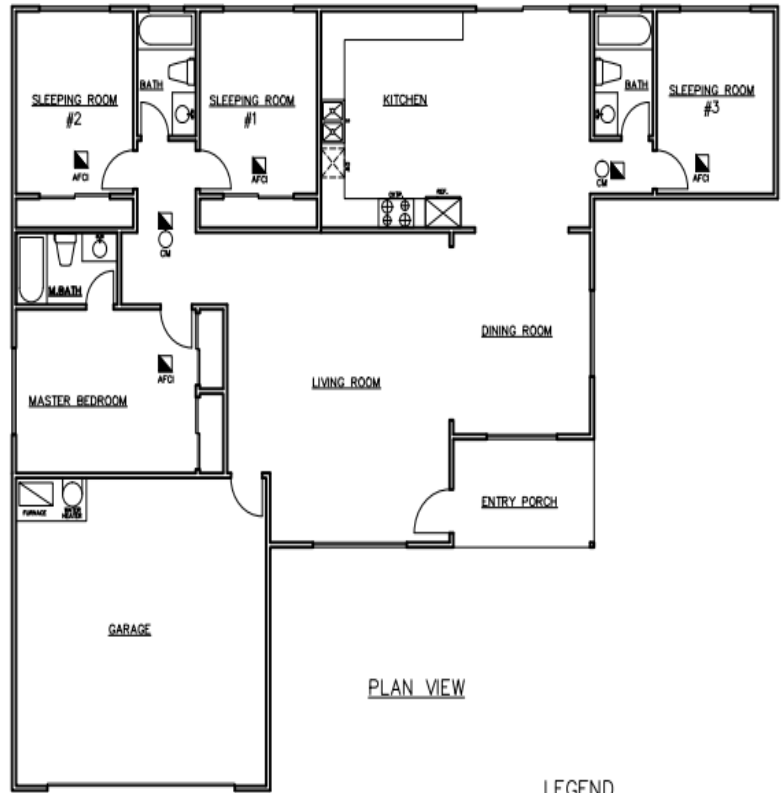




115 RAMSDALL STREET • FIRCREST, WA 98466-6999 • (253) 564-8901 • www.cityoffircrest.net

Sample of residential smoke/ Co2 detectors locations

- One smoke alarm must be installed inside every room used for sleeping purposes.
- One smoke alarm must be installed centrally located outside of each separate sleeping area in the immediate vicinity of bedrooms. If there are multiple bedrooms grouped together on the same floor, one smoke alarm in the hallway outside of the bedrooms meets the requirements. If there are one or more rooms separating bedrooms, an additional smoke alarm must be installed in the hallway outside of the bedroom to meet the requirements.
- If there are removable ceiling panels, install the smoke alarm on the wall.
- Do not install alarms in or near kitchens, bathrooms, or garages - where conditions might set off nuisance alarms routinely.
- Do not install near a window, outside door, or within 3 feet of forced-air register.
- The smoke alarm should be installed on the bottom of a floor joist if the ceiling has no drywall or plaster. It should never be placed on the ceiling between the joists.
- On floors without bedrooms, install alarms near the stairway leading to the floor above, in or near dens, living rooms, family rooms, and other living areas. National Fire Protection Association also suggests installing alarms in dining rooms, utility rooms, and hallways. In open stairways (no doors at top or bottom), install smoke alarm near top of stairs.
- Always install smoke alarms according to the manufacturer's directions.



LEGEND

- SMOKE DETECTOR
- CM CARBON MONOXIDE ALARMS

B SMOKE DETECTOR LOCATIONS